



JEWISH FAMILY AND CHILD SERVICE **OF GREATER TORONTO**

Annual
Report 2024/2025

A message from our CEO **STANDING STRONG, TOGETHER**

For more than 155 years, Jewish Family and Child Service (JF&CS) has been a trusted source of strength and support that is rooted in Jewish values, grounded in compassion, and committed to supporting individuals and families through life's most difficult moments.

Since October 7, 2023, our community has endured ongoing trauma and has been experiencing wide-spread antisemitism. Many have been shaken to the core, and in moments like these, a strong Jewish social service agency is not only meaningful, but essential. At JF&CS, we deliver programs that go beyond meeting basic needs. We work to strengthen safety and security, improve mental health and wellness, and lessen the impacts of poverty. We are a safe and welcoming space that fosters pride and belonging, nurtures self-worth and builds resilience. With dignity at the heart of our work, we offer compassion, connection and hope as we walk alongside those in need ensuring they know they are never alone.

As a result of the rising cost of living, increased community stress, and growing mental health struggles, we have seen greater complexity of needs. Thanks to the generosity of our community, we have been able to respond with agility and innovation, meeting the moment with meaningful, measurable impact.

A transformational \$3-million gift, facilitated through the Jewish Foundation of Greater Toronto, made two landmark initiatives possible: a comprehensive Family Violence Program, which will now expand its existing services for women to also include men and children, and expanded Youth Mental Health Supports focused on trauma, grief and crisis response. Achieving these long-held goals has been both a professional milestone and a deeply personal commitment.

These initiatives will help more individuals and families find safety, healing and hope. They will provide wrap-around supports to all family members, breaking cycles of abuse, fostering healthy relationships and creating safer homes. Expanded youth mental health services will give young people the tools to navigate trauma with resilience, reducing long-term impacts on their well-being, education and future opportunities.

Over the past year the Jewish community faced increased isolation and invalidation of trauma. Our response was increased staff development and a realignment of our organizational structure and programming. We created a new role of Manager, Jewish Life and Culture and developed programs for children and youth in the public school settings aimed at bolstering their Jewish pride and strengthening their resilience.

The learnings I gained through my participation in and completion of the prestigious Spertus Institute's Senior Leadership Certificate Program in Combating Antisemitism further informed and enhanced our staff's response to children's mental health and the impact of antisemitism. From this stemmed the opportunity to participate in a panel discussion at the Network of Jewish Human Service Agencies' 2025 PowerNet Conference and an invitation to attend a round table discussion with government officials in Ottawa. Significant effort has also been given to helping others beyond the Jewish community understand the ongoing trauma and impact experienced by both clients and staff.

In this Annual Report, you'll read stories that bring our work to life, from spiritual care provided by our Chaplaincy team to rapid support for Israeli newcomers to the life-changing impact of the JDD Adolescent Centre for Jewish students seeking mental



health support and belonging. These are more than services delivered, they are lives transformed.

To our incredible staff, Board and volunteers, as well as our amazing community, donors and funders: you make this possible. Your compassion, dedication and generosity are the driving force behind everything we do. You do more than sustain programs, you uplift lives and strengthen our community.

This year, I bid a heartfelt thank you to Sharon List as she completes her second and final term as Board President. Her vision, compassion and leadership have strengthened our mission and left a lasting impact on me and our community.

As we look to the future, I invite you to stand with us in our shared commitment to Tikkun Olam (Repairing the World). Guided by enduring Jewish values, we will continue to build a community, and a world where humanity flourishes and Jewish life thrives.

Wishing you and your families a healthy and peaceful New Year! Shana Tova and G'mar Chatima Tova!

With gratitude,

Talyah Breslin
Chief Executive Officer
Jewish Family and Child Service

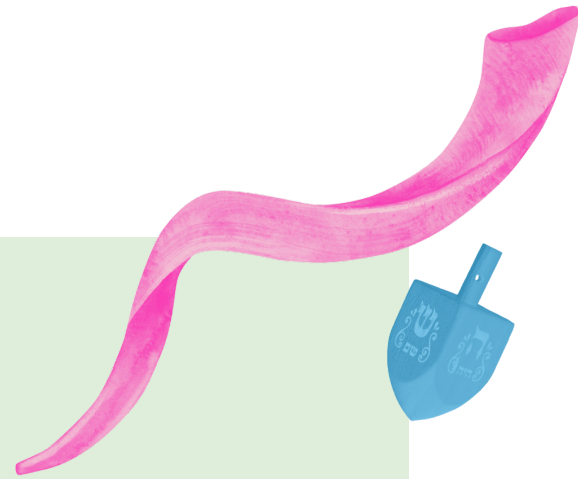
BY THE NUMBERS

Safety and Security

590+ Jewish children and youth at risk of abuse or neglect received advocacy and support **

86%

of Jewish youth in our inaugural *Roots, Ruach & Resilience* program reported being satisfied with the 4 week pilot exploring Jewish identity, culture, and mental health. The JF&CS facilitated sessions included Jewish identity, antisemitism, and the significance of Israel; as well as Jewish food, values, and holidays **



Poverty Reduction

700+ clients and community members were supported with boxes of kosher groceries for Passover and year-round through our 3 community pantries *

985 individuals received Jewish holiday meals *

347 subsidies provided for Jewish summer camps *

1,189 Holocaust Survivors accessed emergency financial assistance and supportive counselling **



Mental Health and Wellness

1,600+ chaplaincy hours were provided to Jewish community members in hospitals, long-term care homes, or correctional facilities **

370+ individuals accessed therapy groups and workshops to support them through life's challenges ranging from grief and bereavement, to general counselling and navigating through separation and divorce **

89 people were serviced in our Jewish hospice program **



* Statistical data drawn from the 2024 calendar year.

** Statistical data drawn from the 2024-2025 fiscal year (April 2024-March 2025).



A message from the Board President

As my second and final term as Board President draws to a close, I have been reflecting on the privilege it has been to serve this remarkable organization – Jewish Family and Child Service. Representing JF&CS in the community, at stakeholder tables, at fundraising events, and in inspiring learning spaces has been an honour. Time and again, I hear about the deep respect in which our agency is held. My admiration for our dedicated professionals grows with every innovative response to the ever-changing needs of our community, with each new partnership formed, and with every initiative undertaken to support the thousands who turn to us for help.

The coming year will see the rollout of our new Strategic Plan – a roadmap that will guide us through the next five years. This plan anticipates future needs and addresses urgent issues: the rapid evolution of technology, looming economic shifts and the poverty that results, the rising demand for children's mental health services, and the alarming increase in family violence. Guided by strong leadership, our staff have consistently risen to meet emerging crises while never losing sight of the daily responsibility to care for the most vulnerable among us.

We will expand programs that help children navigate the many challenges before them. We will strengthen our domestic violence services,

offering counselling, guidance, and ongoing support to all impacted family members. We will refine the organizational structures that enable us to deliver on our mission. And we will continue to grow as a community learning organization – a hub where professionals across the social service sector gather to share knowledge, build skills, and create solutions to protect and uplift those most in need.

These accomplishments are only possible through the unwavering support of our donors and funders. We have worked hard to nurture and strengthen our relationships, and I am confident that they will remain strong in the years ahead.

My journey with JF&CS, from committee member to two-term President, has been profoundly meaningful. I have had the privilege of working closely with our Senior Team, both past and present, and I am deeply grateful for their wisdom, support, and generosity in sharing their expertise. To each of you thank you for your leadership, partnership, and unwavering commitment.

To our CEO, Talyah Breslin – thank you for your partnership, openness, and determination in facing rising costs, growing client needs, and stagnant funding. You have created a culture where every voice matters and have led with compassion, clarity, and vision.

I especially treasure your friendship.

I have also been fortunate to work alongside a remarkable Board of Directors. As members have transitioned in and out, each has brought unique expertise, insight, and an unwavering commitment to excellence. I am grateful for the dedication and wisdom of those who came before me, and those I have had the honour to serve with today.

To Dr. Michael Minden, our incoming Board President – my very best wishes. I have no doubt JF&CS will thrive under your skilled and thoughtful leadership, and I look forward to supporting you during your term.

It has been an extraordinary honour to serve as President, both in this and my earlier term. To contribute in a meaningful way, and to witness the growth of an agency that has served our community for over 155 years has been one of the great privileges of my life. Thank you for entrusting me with this responsibility.

L'Shana Tovah Tikatevu!

Sharon List
President, Board of Directors
Jewish Family and Child Service

JF&CS STRATEGIC PLAN '25-'30



VISION

A resilient, inclusive community where individuals and families thrive – empowered by hope, dignity and compassion.

MISSION

Jewish Family and Child Service is a multi-service agency that strengthens and supports individuals, children and families, serving the Jewish community and all others who seek support.

PILLARS OF IMPACT



Strategic Directions

- 1 Strengthen organizational culture and infrastructure to prepare for future growth.
- 2 Clearly communicate agency mandate and actively promote breadth & depth of services, both internally and externally.
- 3 Evolve services and partnerships to address changing needs of the communities we serve.
- 4 Enhance financial sustainability of organization.

Organizational Values

Mutual
Accountability

Trust &
Collaboration

Learning &
Renewal

Care &
Resilience

Inclusion &
Diversity

Adaptation,
Innovation &
Creativity



Why the JDD Adolescent Centre Matters for Jewish Students

At the heart of Jewish tradition lies *Tikkun Olam* (Repairing the World). This guiding principle drives the Jerome D. Diamond Adolescent Centre (JDD), a unique educational day treatment program operated by Jewish Family and Child Service in partnership with the Toronto District School Board (TDSB). Serving youth aged 11 to 17 who face complex mental health challenges, the JDD offers more than an education, it provides a pathway to resilience, and hope.

A Legacy of Care

Founded in 1975 as Centre Shelanu (Our Centre), the JDD was renamed in 1980 to honour Jerome D. Diamond, then Executive Director of JF&CS. Nearly 50 years later, it remains a place where adolescents, struggling to manage in the main-stream school system, not only re-engage with their learning but also rediscover their sense of self. Students move on from the JDD with renewed confidence, prepared to continue their education and life journeys with enhanced skills, confidence, dignity and strength.

Holistic Support for Youth and Families

Each year, the JDD serves up to 28

students and their families through a holistic model combining academics with therapeutic day treatment. In this nurturing environment, students learn to manage emotions, build resilience, and re-engage with education, while families receive tools and guidance to support their child's progress and their own well-being.

Safe Spaces in Challenging Times

In recent years, Jewish children and youth have faced growing challenges. A recent federal report, *Antisemitism in Ontario's K-12 Schools*, revealed hundreds of incidents of hate and exclusion, underscoring the urgent need for school to be a safe space. A significant number of students at the JDD identify as Jewish, and all find pride and belonging in an inclusive, culturally sensitive environment. Students celebrate Jewish holidays, including a model Passover Seder, enjoy a fully kosher kitchen thanks to a generous donor, and feel safe expressing their faith and identity, regardless of their background.

As part of JF&CS, the JDD provides Jewish families with direct access to care, bypassing general referral

processes and ensuring timely, culturally sensitive support. A recent JF&CS parent survey confirmed this impact: 100% of respondents agreed their child could safely express their identity at the JDD.

One parent shared: "Although it was not the determining factor in choosing the school for our child, the fact that the JDD embraces Jewish values added a level of comfort for us. It was like they were family."

Another added: "The JDD is a special place. Rabbi Mordechai was instrumental in helping my daughter prepare for her Bat Mitzvah. We are so grateful for that!"

Powered by Generosity

This vital work is made possible by the generosity of our donors and funders, who ensure that every student, Jewish and non-Jewish alike feels seen, heard, and empowered.

With continued support, the JDD will remain a beacon of healing, belonging, and hope for the youth who need it most.

Chaplaincy at JF&CS: Bringing Light and Connection

Guided by the Jewish value of *kol Yisrael arevim zeh b'zeh* ("all Jews are responsible for one another"), Chaplaincy Services at JF&CS provide a lifeline of spirituality, hope, and connection for some of the most vulnerable members of our community.

Whether in hospitals, long-term care homes, or correctional facilities, JF&CS Chaplains respond with compassion and advocacy, ensuring no one faces physical or emotional isolation alone. Over the past year, the team conducted more than 10,000 visits and 1,600 hours of support across Ontario -- acts of care that extend far beyond discussions of Judaism, offering dignity, understanding, and human connection.

More Than a Visit

Each JF&CS chaplain visit represents a moment of recognition and compassion. Chaplains provide rabbinic consultations, lead holiday observances, offer spiritual counselling, and conduct regular check-ins with those in need. They also work closely with institutional staff, ensuring that the cultural and religious needs of Jewish clients are understood and respected.

At a time when antisemitism is rising, the need for these services has grown more urgent. For many, a chaplain's visit is not only about faith, it is about feeling seen, affirmed, and supported during deeply challenging moments.

A Passover Story

One meaningful example took place shortly before Passover. A remote mental health facility reached out on behalf of Peter*, a Jewish patient facing complex emotional struggles. Though not observant, Peter longed to connect with the traditions of Passover.

JF&CS Chaplain David answered the call. What began as a quiet conversation grew into a heartfelt exchange about identity and hope. David brought Peter a Haggadah with English translations and arranged for matzah and grape juice so he could meaningfully participate in the holiday.

Reflecting on their conversation about the meaning of Mitzrayim (Egypt), David shared: "Just as the Israelites were freed from their physical Mitzrayim, today we all face personal Mitzrayim—places where we feel stuck. But with faith, connection, and community, we find the strength to journey forward."

Peter was deeply moved, later expressing immense gratitude for being seen, understood, and spiritually nourished at a difficult time.

Powered by Community Support

This story is just one of thousands made possible through the generosity of our donors and supporters. Your contributions keep JF&CS Chaplaincy Services a beacon of comfort and tradition, ensuring compassion reaches the most unexpected corners of our community.

Together, we bring light, kindness, and spiritual connection to those who need it most.

** Name has been changed in order to protect anonymity of our clients.*



Finding Safety, Strength, and Belonging: JF&CS Supports Israeli Newcomers with Compassion and Courage



In the aftermath of October 7, 2023, many Israeli newcomers, grappling with trauma and an uncertain future, arrived in the Greater Toronto Area seeking respite and safety.

JF&CS responded immediately. Thanks to the generosity of our donors and funders, and the unwavering commitment of our staff and partners, we turned empathy into action. Together, we created a compassionate and culturally responsive lifeline for individuals who had lost so much and were rebuilding their lives.

More than **200 individuals** and families received support through JF&CS services. Some had escaped the Nova music festival and several had seen their homes and sense of safety and security destroyed. They left behind communities, careers, and loved ones. What they found at JF&CS was more

than just services; they found a place where healing could begin.

At our 1 Open Door Branch at the Vaughan Jewish Community Campus, Hebrew-speaking social workers, many with personal ties to Israel, welcomed clients with warmth and understanding. A shared language and recognition of shared pain helped break down barriers of fear and isolation. Strangers became neighbours. Heartbreak met hope.

To meet the urgent needs of Israeli newcomers, JF&CS launched culturally attuned programs:

Crisis Response Support

For an extended period, JF&CS, in partnership with Jewish Immigrant Aid Services (JIAS) and Jewish Vocational Services (JVS) Toronto, provided wrap-around care and a multi-service response to the diverse needs of newly

arrived Israeli immigrants. This included drop-in trauma counselling, gift cards for food, and a pop-up marketplace offering donated warm winter clothing, coats and boots, as well as much needed household essentials. This culturally sensitive environment ensured dignity and immediate relief for those arriving with little more than a suitcase.

Women's Talk – Israeli Women's Group

Recognizing the specific needs of women navigating resettlement and trauma, and to address an existing waitlist, this 12-week support group offered guidance, community, and empowerment. Through shared experiences, participants explored immigration challenges, parenting, mental health, and reclaiming identity. Supported in part by UJA, this initiative was facilitated by JF&CS and was well attended.



200*

Israeli newcomers received support through JF&CS services. Some had escaped the Nova music festival and several had seen their homes and sense of safety and security destroyed.

Trauma Therapy Program

Delivered in Hebrew or Russian, this ongoing group program is designed for individuals who experience various forms of interpersonal trauma in their families. It equips participants with essential tools for emotional regulation, trauma education, and peer support. Funded by the Region of York and led by JF&CS social workers, it integrates language fluency, cultural sensitivity, and Jewish traditions in ways that foster connection and healing. The group setting serves as a practical approach to reducing waitlist barriers and ensures timely support for this population.

1-1 Trauma Counselling

JF&CS provides 1 - 1 culturally sensitive, language-specific trauma counselling for individuals arriving in Canada from Israel who have experienced interpersonal trauma. Clients receive 12 to 16 weeks of therapy, with the

possibility of extension based on individual need. This program was initially established through the support of a generous private donor and is delivered by a JF&CS social worker. Funding has been allocated to continue this program for an additional year.

From the outset, Jewish traditions and values have been woven into therapeutic care. Clients received Rosh Hashanah baskets, sufganiyot at Chanukah, and hamentashen at Purim. Holidays became healing anchors—light (Chanukah), freedom (Pesach), renewal (Tu B'Shivat).

For many, group sessions were the only consistent support in a turbulent time. They offered safe spaces to express grief, rebuild trust, and rediscover resilience. Participants would often ask, "What activity will we be doing next week?" in hopeful anticipation

of another group session and seeing each other again.

Parents felt more capable of supporting their children. Isolated individuals found friendship. Couples navigating loss discovered renewed hope. The transformation was profound. This work would not be possible without the generous support of our donors and funders, the dedication of our staff, and the collaboration of our partners. Because of them, we are able to offer more than services; we offer connection, community, and hope.

In times of need, JF&CS is more than simply a program or a service. We are a community rooted in empathy, driven by action, and united by the belief that no one should face trauma alone.

The Ways You Gave

Gifts-in-Kind

Gifts-in-Kind donations do more than provide essentials; they create dignity, foster belonging, and spark joy. From hockey and baseball games to new backpacks, school supplies, clothing, camp essentials, gift cards and more, we are profoundly grateful to our generous donors.

Tributes + Memorials

Recognize individuals and families during their times of joy and sadness.

ECHOage

Celebrate your birthday or mitzvah by making JF&CS the beneficiary of your special day.

Donate-A-Car

Turn your vehicle into a gift by donating through Donate-A-Car.

Mitzvah Gifts

A Mitzvah Gift can provide Rosh Hashanah and Passover meals, synagogue tickets, and camp essentials to those who need them most.

Giving Tuesday

Giving Tuesday supports food security for JF&CS clients throughout the year with fresh produce deliveries and grocery gift cards.

1868

Society

Donor Loyalty Program

We gratefully acknowledge members of the 1868 Society, devoted donors who contributed to JF&CS for five or more consecutive years.

1868 Society members are marked with a purple triangle. ▲

**Monthly
Mitzvah
Makers**

Monthly Giving Program

We gratefully acknowledge Monthly Mitzvah Makers, donors who committed to supporting JF&CS on a monthly basis throughout our 2024/25 fiscal year.

Monthly Mitzvah Makers are marked with a green triangle. ▲

Our sincere appreciation to the many JF&CS donors who wish to remain anonymous, and to those who support our work but whose names do not appear in this Annual Report. The donor list reflects donations made between April 1, 2024 to March 31, 2025 and every effort has been made to ensure proper recognition of each donor (\$180+). We apologize for any errors or omissions.

Funds

We acknowledge with gratitude the following endowment and long term funds that have been established in support of Jewish Family and Child Service. Some are presently making a difference. Others will make a difference in years to come.

Estate of Alisa Abrahams
Sarah & Harry Azaroff
and Pearl & Samuel Stroh Fund
Banack Family Chanukah Fund
Maxine Bass Fund
David Baum Scholarship Fund
Talia, Jonah & Yael Benmor Fund
Dr. Neil Berman Library Fund
Beverley Black Fund
Irene Borins Ash Fund
BrightEnd Spirits Fund
Aaron & Toby Brotman
Memorial Fund
Bobby Cherniak Camp
Endowment Fund
Jeremy and Jo-anne Cole Family
Endowment Fund in support of
the Levelling the Playing Field
Maxwell Cummings Fund
Herzig Cuperfain Family Fund
Marvin & Miriam Dryer
Greatest Needs Fund
Judith Duke Memorial Fund
Freda Fejer Endowment Fund
Dora Fichman Schwarz & Charles
Schwarz Scholarship Fund
Abraham z"l & Marcy Fish Fund
Robert z"l & Maxine Fish
Garry & Joanne Foster Fund

Michael Freeman Scholarship Fund
Ruth Garbe Fund
The Idek Geitzhals Camp Fund
The Elinor Gertner Memorial
Endowment Fund
Jenne & Henry Goodman
Scholarship Fund
The Oscar Goodman z"l
& Sheila Meiteen Fund
Nathan z"l and Irene Gray
Endowment Fund
Mark Gross Fund
Gertrude Helperin
Endowment Fund
Drs. Roslyn & Murray z"l Herst
Education Fund
M. Ison Family Bar & Bat
Mitzvah Fund
Mark Janasz Memorial Fund
Henry Korenblum 1:1 Camp Fund
The Lampe Family
Endowment Fund
Eva Landa Memorial
Scholarship Fund
Stan Lerner Memorial Fund
Constance Levis Homeless
Assistance Fund
Edna Levitt Scholarship Fund
Ralph List Family Fund

Myer Lukofsky Endowment Fund
Alfie Magerman Memorial Camp
Fund
Freda Manson Bacher Fund
Obront Family Woman Abuse Fund
The Orzy Family Fund
The Barbara Pinchuk Unsung
Heroes Legacy Fund
Lolly Propas Memorial Fund
Simone Sandler Memorial Fund
Robert & Debi Schacter
Family Fund
Shafran Scholarship Fund
Robert & Naomi Shapero Family
Endowment Fund
William Solomon Scholarship Fund
The Steven Somborac
Scholarship Fund
Bonni Jean Stewart Education Fund
Bert & Barbara Stitt Family
Children's Fund
Wattenberg Auslander
Memorial Fund
Dora Wilensky Memorial Fund
Gordon S. Wolfe Children
& Youth Fund
Lorne Wolfson & Lorie
Shekter-Wolfson Family
Endowment Fund



Gordon S. Wolfe Legacy Society

We acknowledge with gratitude the following individuals who have committed to leaving a legacy gift to Jewish Family and Child Service. By leaving a legacy gift, they are making a forever-impact on our community.

Joan and Bernie Aaron
Maxine Bass
Irene Borins Ash, z"l
Estate of Toby Brotman
Bobby Cherniak Camp
Endowment Fund
Richard L. Cummings
A. Davidson
Estate of Jennifer Lynne Dorfman
Estate of Jeri Elliot
Robert S. Fish, z"l and Maxine Fish, z"l
Estate of Adrienne Folb
Estate of Shirley Foster
Allan Jack Freeman, z"l
Oscar Goodman, z"l
Estate of Shirley Granovsky

Nathan, z"l and Irene Gray
Endowment Fund
Estate of Albert Greenberg
Estate of Ethel Harris
Roslyn and Murray Herst
Warren J. Horowitz
Marshall and Miriam Kesten
Shirley Lillian Kofman, z"l
Lampe Family
Alan Levine
Sharon List
Susan Maldoff
S. Richard Orzy
David Peltz
Annette Rapoport
Estate of Cecille Ratney

Estate of Mervyn Michael Samuels
Robert & Naomi Shapero Family
Endowment Fund
Bonnie Lawrence Shear
Gerald Slan
Steven Stein
Bonni Jean Stewart
Jack and Judy Winberg
Bryon White
Estate of Harvey Saul Wolfe
Linda Wolfe
Lorne Wolfson and Lorie
Shekter-Wolfson
Morris Zucker, z"l

GENEROUS DONORS

▲ 1868 Society ▲ Monthly Mitzvah Makers

\$500,000-\$999,999

The Azrieli Foundation ▲

\$50,000-\$499,999

Paul Bronfman Family Foundation
Aubrey & Marla Dan Foundation ▲
Fineberg Foundation
Freeman Family Legacy Fund
at the Jewish Foundation
of Greater Toronto
Jack Morris Freiman Fund
for Holocaust Survivors
at the Jewish Foundation
of Greater Toronto
Holocaust Survivors Support Fund
at the Jewish Foundation
of Greater Toronto
The Kavelman Fonn Foundation ▲
The Joseph Lebovic
Charitable Foundation
The Prosserman Family ▲
Lewis and Charlotte Steinberg
Family Foundation

\$10,000-\$49,999

Joan and Bernard Aaron ▲
Noah Backstein
Blue Coral Investments Inc.
David & Trudy Broude ▲
Beverly Chernos ▲
Children's Aid Foundation ▲
Jeremy & Jo-anne Cole ▲
Doane Grant Thornton Foundation

Estate of the late
Jennifer Lynne Dorfman
David & Risa Dulberg
Robert & Ellen Eisenberg ▲
The Emmet Foundation ▲
Famglas Foundation
Estate of Adrienne Folb
Ganz Family Foundation ▲
Yaniv & Adi Golan
The Goodman Family Foundation
Harrowston Fund for Children with
Special Needs at the Jewish
Foundation of Greater Toronto ▲
Helen Jarnicki Fund for the Support
of Holocaust Survivors at
the Jewish Foundation
of Greater Toronto
Leboff Family Charitable
Foundation ▲
Sophie & Stephan Lewar Endowment
Fund for the JF&CS at the Jewish
Foundation of Greater Toronto ▲
David & Naomi Mansell
and Mansell Foundation ▲
Naomi Fund at the Jewish Foundation
of Greater Toronto
National Council of Jewish Women
of Canada, Toronto Section
Elliott Peranson and Sharon Cohen ▲
Poverty Initiative Endowment Fund
at the Jewish Foundation
of Greater Toronto
Saand Inc.

Robert & Naomi Shapero ▲
Paul Sinclair ▲▲
Steven & Rodeen Stein ▲
The Weisfeld Family
Charitable Foundation
Jack & Judy Winberg ▲

\$5,000-\$9,999

Karen Durbin & Frank Ander ▲
Bam Foundation
Cheryl Gutzin and David Barth
and Family ▲
Daniel & Jenna Brodlieb
Brown Group of Companies
- Mel Brown, Marilyn Pacht
and Glennie Mandel
The Cummings Family ▲
Lindsay & Michael Detsky
Doane Grant Thornton
Jenny & Randy Frisch ▲
Stan & Diane Gasner Fund ▲
Jeffrey & Lydia Goldfarb
Helen & Barry Goldlist ▲
Jonathan Grauman
Dorothy Green ▲
Rivette Herzig ▲
Allen & Celia Hirsh Family Fund
at the Jewish Foundation
of Greater Toronto ▲
Lipco Investments Inc.
Earl & Jordanna Lipson Fund
at the Jewish Foundation
of Greater Toronto ▲

Sharon W List ▲▲
 Ari and Pearl Litwin Foundation
 Ellen Newman ▲
 The Orzy Family Fund
 at the Jewish Foundation
 of Greater Toronto ▲
 Alyce and Alex Orzy Memorial Fund
 at the Jewish Foundation
 of Greater Toronto
 Jordan Propas Camp Scholarship
 Fund at the Jewish Foundation
 of Greater Toronto ▲
 The Estate of Cecille Ratney
 Rockport Holdings Limited
 Samuel/Zivot Family Fund
 at the Jewish Foundation
 of Greater Toronto
 Mark Shiner ▲
 Nathan and Lily Silver
 Family Foundation ▲
 Eric & Marsha Slavens ▲
 Judith Teller Foundation ▲
 Burnett & Chave Langbord Thall Fund
 at the Jewish Foundation
 of Greater Toronto
 UJA Jewish Federation
 of Greater Toronto
 Carole Winberg ▲
 Barbara & Harvey Wolfe Family
 Charitable Foundation ▲
 Yacht Family Foundation ▲
 Fernande & Marco Zevy Endowment
 Fund at the Jewish Foundation
 of Greater Toronto

\$1,800-\$4,999

1056575 Ontario Ltd.
 Neil & Cindy Abramson ▲
 Ariella Baron & Michael Armel ▲
 Joshua & Karen Auslander ▲
 Sandy Posluns & Eli Barr ▲
 Dr. Benjamin Barankin
 & Dr. Kimberly Liu-Barankin ▲
 Barrday Inc. ▲
 Cookie Baum ▲
 Beaux Properties
 Nani & Austin Beutel Fund
 at the Jewish Foundation
 of Greater Toronto
 Mark Canes
 Andrew Cariboni
 Daniels Capital Group ▲
 Jeanie Davis ▲
 Detailz
 Rena Mendelson & Allan Detsky
 Didactic Global, LLC
 The Honourable Charles
 & Mrs. Anne Dubin Youth Fund
 at the Jewish Foundation
 of Greater Toronto ▲

Lorne & Yaffa Factor
 Mitchell Fellen & Kathy Hillier ▲
 Allan and Susan Fenwick
 Charitable Foundation
 Elissa & David L. Fingold ▲
 Deborah & Neil Fischler
 Jeremy Freedman ▲
 Harold & Ethel Freeman
 Foundation ▲
 Harvey & Leah Fruitman ▲
 William Gazer Fund for the
 Support of Holocaust Survivors
 at the Jewish Foundation
 of Greater Toronto
 Dr. Karen Gilberg ▲
 Judith & Richard Gorman ▲
 David & Lucille Griff ▲
 Alexander E. Grossman Foundation
 Craig Guttman & Esther Berglas ▲
 Sean & Julia Guttman ▲
 George and Kay Goldlist Family
 Charitable Fund at the Jewish
 Foundation of Greater Toronto ▲
 Jill Kamin & Murray Hart ▲
 Harzahav Fund
 at the Jewish Foundation
 of Greater Toronto ▲
 Elliott Jacobson & Judy Malkin ▲
 Miriam Kagan ▲
 Sam & Mary Kohn ▲
 Krauss Family Charitable Trust
 Manny & Arlene z'l Leder ▲
 Jeffrey Lipton & Ellen Warner ▲
 Ian & Elaine Lurie Family Fund
 at the Jewish Foundation
 of Greater Toronto ▲
 Charles and Perri-Anne Magerman
 The Minett Foundation ▲
 James & Julian Moncarz ▲
 Miles Nadal
 Berl and Rebecca R. Nadler
 Family Foundation
 Tziporah Cohen & Jay Nathanson
 Fund at the Jewish Foundation
 of Greater Toronto
 Oracle Trading Inc.
 Orbach Family Foundation
 at the Jewish Foundation
 of Greater Toronto
 Paradise Homes Corp.
 Sharon Cohen & Elliott Peranson
 Family Fund at the Jewish
 Foundation of Greater Toronto
 Ruth Rayson Fund for the Support
 of Holocaust Survivors
 at the Jewish Foundation
 of Greater Toronto
 Harold & Iris Rosenfeld ▲
 Ruby Family Foundation
 Miriam Sapiro

Galit Saunders & Adam Sarfaty
 Gabriella Schmidt Fund
 for Holocaust Survivors
 at the Jewish Foundation
 of Greater Toronto
 Sonia Schwartz
 Robert & Sheila Sheaffer ▲
 Joy Shuchat ▲
 Rona Shuster
 Randi Silverstein
 Charles & Lynne Simon ▲
 Slavic Evangelical Baptist Church
 D. Sommer Medicine Professional
 Marian Stefaniu and Dr. Rodica
 Stefaniu
 Torkin Family Fund
 at the Jewish Foundation
 of Greater Toronto ▲
 Neil Uditsky Memorial Fund
 at the Jewish Foundation
 of Greater Toronto
 Alissa & Michael Wasserman

\$1,000-\$1,799

Ralph Ades
 Tatiana Alechinskaia
 Andrea Appelby ▲
 Meyer & Anita Balter ▲
 Larry & Arna Banack ▲▲
 Steven Baum ▲
 Jeffrey Beber ▲
 Barry Berens & Gillian Pesner ▲
 Beth Tikvah Synagogue Men's Club
 Beth Tzedec Men's Club
 David & Cheryl Blinick ▲
 Michael & Lauren Blinick
 Talyah Breslin ▲
 Noah Buchman & Orit Sinai
 Mark Bulgutch ▲
 Howard & Renee Colton ▲
 Congregation B'nai Torah
 Ian & Jessica Cooper ▲
 Dr. Perry & Shirley Cooper ▲
 Belinda David
 Leonard & Judy Drenfeld ▲
 Dryer Family Fund
 at the Jewish Foundation
 of Greater Toronto ▲
 Barry Eisen & Heidi Surkis-Eisen
 Patrick Erlich
 David & Rosalie Farb ▲
 Hindy Friedman ▲
 Harvey Barry Gales
 Peter Godfrey ▲
 Edward & Zipora Goldberg ▲
 Linda & Gary Goldberg ▲
 Martin & Sharon Goldberg ▲
 Goldstein Family Fund at the Jewish
 Foundation of Greater Toronto
 Sari & Ben Goldstein ▲▲

Matthew & Aviva Gottlieb ▲▲
 Dan & Rhonda Grant ▲
 Kathy & Maurice Green ▲
 Ruth Greisman ▲
 Sacha Hayward
 Celia & Allen Hirsh ▲
 Lauragaye Jackson ▲
 Ian & Jillian Joffe ▲
 Alisha Kaplan ▲
 Miriam & Marshall Kesten ▲
 Paula Keyfitz ▲
 Patti J. Kirk ▲
 Klara Charitable Fund at the Jewish
 Foundation of Greater Toronto
 Mitchell Korman
 Helene Korn
 Marc Kornhaber
 Stephen & Frances Kraft ▲
 Janice & Howard Langer Fund
 at the Jewish Foundation
 of Greater Toronto ▲
 Frank Laurie
 The Irving Levine Foundation
 Bill & Anne Lieberman ▲
 Susan Lieberman
 Susan & Gerry Maldoff Fund
 at the Jewish Foundation
 of Greater Toronto
 Marc Milgrom
 Stephen Richard Morrison ADR Inc.
 Amanda & Noah Murad
 Nellie Orfus ▲
 Debby Orzy ▲
 Isaac Osipovicz Memorial
 Endowment Fund at the Jewish
 Foundation of Greater Toronto ▲
 Eric & Risa Paul
 Dr. Michael David Paul, z"l ▲▲
 Renanna Pellman ▲
 Peltz Family Fund ▲
 at the Jewish Foundation
 of Greater Toronto
 Ellen Powell
 Teresa & Alberto Quiroz ▲▲
 RLTD Fund at the Jewish Foundation
 of Greater Toronto
 The Jack Rose Family Foundation
 Ellie Rotenberg z'l Scholarship Fund
 at the Jewish Foundation
 of Greater Toronto
 Jordan Samery
 Lissie Sanders
 Robert & Simmy Shnier ▲
 Neil Shore ▲
 Gerald & Judy Slan ▲
 Albert Sliwin and Family
 Morris & Doreen Sosnovitch ▲▲
 Sigmund Soudack, z"l
 & Linda Soudack ▲
 Tamara Steinberg

Stendel Family Foundation
 at Toronto Foundation
 Gordon & Joyce Strauss
 Harry Strauss z"l & Shirley Strauss
 Ronnie & Shana Strauss & Family ▲▲
 Glen Strom ▲
 John Sweet ▲
 Mark Tinnerman
 Didi Urbach Endowment Fund
 for the Vocational Enrichment of
 Women at the Jewish Foundation
 of Greater Toronto ▲
 Michelle & Adam Wagman
 Sonny & Lynne Walters ▲
 Sharon Weintraub ▲
 Nan and Jack Wiseman Family Fund
 at the Jewish Foundation
 of Greater Toronto ▲
 Dr. Jean Wittenberg
 Myron Wolfe
 Young Women's Branch Sons
 of Jacob
 Barbara Zeller

\$500-\$999

Moshe & Janice Abecassis ▲▲
 Adath Israel Congregation
 Adina Ander ▲
 Toulou Bahramian
 Dr. Alan Bardikoff
 Maxine Bass ▲
 Theodore Batcher
 Elie Calvin Benichimol
 Dr. Eduard Bercovici ▲
 Sophie Berger
 Wanda Berrkelheimer
 Daniel Bierstone ▲
 Harry Blaier ▲
 Allan Blatt
 Steven Bloom
 & Tamara Hauerstock ▲
 Michael & Carolyn Bowman ▲
 Karen Bricker ▲
 Jesse & Jennifer Brodlieb ▲
 Carrie Buchwalter
 Penny & Arnie Cader ▲
 Heather Cohen ▲▲
 Edith & Jerome Cohen ▲
 Robin Cohen ▲▲
 Ruth-Ellen Cohen
 Bruce & Shayla Cole ▲▲
 Phillip Cooper ▲▲
 Jerry & Marilyn Cukier ▲
 Lynn Cutler ▲
 Helen Daniels ▲
 Mark Daniels
 Donath Family
 Lynda Douglas
 Miriam & Marvin Dryer ▲
 Dr. Ari & Elisa Eisen ▲

Sharissa Ellyn
 Pearl Elman ▲
 Stanley & Paula Epstein
 Hershell Ezrin
 & Dr. Sharyn Salsberg Ezrin ▲
 Mark & Ellen Feldman ▲
 Shim & Vivian Felsen ▲
 Gordon & Ricki Fenwick
 Courtney & Warren Fireman
 Bernard Fishbein ▲
 John & Marcie Fisher
 Phyllis and Ab Flatt Family
 Endowment Fund
 at the Jewish Foundation
 of Greater Toronto
 Paula Frisch ▲
 Rhoda Frisch ▲
 Lorne Glass ▲▲
 Norman & Debbie Godfrey
 Bonnie Goldberg
 Goldi & Henry Goldberg ▲
 Rick & Yvonne Goldberg ▲
 Rebecca Alter & Zach Goldberg ▲
 Mark Goodman & Avra Rosen ▲▲
 Jessica Green
 Louis & Shirley Greenbaum
 Rebecca Greenberg ▲▲
 Olivia Grier
 Alan & Lori Gutmann ▲
 Pinchas & Dorothy Gutter
 Robert & Edie Harlang
 Stacey Hoffer ▲
 Lindsi and Michael Hollend
 Jennifer Hunter ▲▲
 Yola M. Hurwitz ▲▲
 Denise Isenberg
 Noah Ivers & Ilana Halperin ▲
 Marilyn Jacobs Philanthropic Fund
 at the Jewish Foundation
 of Greater Toronto ▲
 Mike Kaplan & Merle Rosenhek ▲
 Joy Kaufman ▲
 Carolyn Keystone ▲
 Debbie Kleiner
 Ita & Lenny Kleiner
 Harry & Margaret Klompas ▲
 Eileen & Monty Kobrin ▲
 Sonya Koch
 Zelda Korenblum & Family ▲
 Katy & Clifford Korman ▲
 Zachy & Michele Lahav ▲▲
 Mark & Talia Laurie
 Alan & Ellen Levine & Family ▲
 Edna Levitt ▲
 Doreen Levitz
 Miriam Kramer & Aaron Levy ▲
 Gary & Karen Levy ▲
 Sam & Elisheva Lightstone ▲
 Arnold Litwin-Logan
 Donald & Lorraine Loeb ▲

Mae Day Foundation ▲
 Maracon Construction Ltd.
 Mark & Leslie Marmer ▲▲
 Stephen McDonald
 Howard Michaels ▲
 Susy & Murray Miller ▲
 Michael & Sandy Minden ▲
 Mindel Naiberg ▲
 Sarina Nemirov ▲▲
 Rosalie Nepom ▲
 Jay Niederhoffer ▲
 Carol Obront ▲
 Judith Orzy ▲
 Mark & Marci Pearlman
 Darrel & Lynn Pearson ▲
 Diane Pinsky
 Ron & Katherine Prosserman ▲
 Jane & Russell Rendely ▲
 Marlene & Martin Rochweg ▲
 Ruth Malkah Rohde
 Jeffrey Roher
 Susan & John Rose ▲
 Michael Roskies
 Tyler & Jessica Ross
 Linda Ruskin ▲
 Paula Zivot & Gary Samuel ▲
 Brenda & Fred Saunders ▲
 Brian Segal & Roslyn Levine ▲
 Arthur Shapero
 Mr. & Mrs. Elliot Shapero
 Lisa Shaw
 Bonnie Shear ▲
 Owen Shime ▲
 Ivor & Renee Simmons ▲
 Martha Simmons
 Henry & Sueann Singer ▲
 Judi Swartz & Robert Skolnik ▲
 Jordan & Alexis Slatt ▲▲
 Daniel & Shelley Sonshine
 Martin & Francie Storm Fund
 at the Jewish Foundation
 of Greater Toronto
 Raddley & Terry Strauss
 Lowell Strauss
 Barbara Sugar ▲
 Dorothy Tessis
 Preeva Tramiel
 Lily Uster
 Alan & Barbara Vale
 Lorne Vineberg ▲
 Susan Wagman
 Elliot z"l & Helene Wahle ▲
 The Wasserman Family ▲▲
 Terri & Stephen Weintraub ▲
 Byron White
 Gilda Whyne ▲
 Karen & Herb Willer ▲
 Peter Wise
 Wendy & Michael Wolfman ▲
 Wendy Wright ▲

Susan Yack ▲
 Dr. Robert A. Zadik Medicine
 Professional Corporation
 Boris Zaidfeld
 Cecile Zaifman ▲
 Jacalyn Zimmerman

\$360-\$499

Jonathan & Laura Adam ▲
 Bailey Albert
 Rachel Albert
 Janet Aronoff
 David & Rochelle Barkin ▲▲
 Sylvia Bashevkin
 Jonathan Berman
 Jacqueline Betel
 Linda Brager ▲
 Fern & Adam Brody
 Amy & Mitchell Brown ▲
 Bryan Burkart
 Lynda Castor
 Philip & Lisa Draper ▲
 Wayne Edelist
 David Elfan
 Jeffrey & Zelda Farber ▲
 Marilyn Feldman ▲
 Gail & Joel Fenwick ▲
 Wendy S. Fish ▲
 Jaclyn Fremes
 Howard & Carole Gelfand ▲
 Gila & Hart Heller Fund
 at the Jewish Foundation
 of Greater Toronto
 Doreen Glick ▲
 Jordan Glick & Rona Kosansky ▲
 Earl Gorman
 Norman & Sharon Gottlieb
 Ruth & Lonny Gropper
 Dr. Peter L. Herschman
 Mel and Marily Horowitz Fund
 at the Jewish Foundation
 of Greater Toronto ▲
 Gerry & Bryna Hyman ▲
 Gail James
 Janice Kaiman ▲
 Robert & Judith Kanee ▲
 Leila Katz
 Kehillat Chaverim ▲
 Michael & Rachel Kerbel ▲
 Brian & Jessica Kimmel ▲
 Samuel Kolber
 Aaron Korman
 Danny & Deborah Kornhauser ▲
 Dan & Carol Leinwand ▲
 Molyn & Bonny Leszcz ▲
 Melanie Levcovich
 Levitt-Dewitt Family Fund
 at the Jewish Foundation
 of Greater Toronto
 Matthew Levy

Mark & Judith Libman ▲
 Norman Light & Dr. Aidlee Craft ▲
 Shauna & Richard Markowitz ▲
 Shawn & Ellen Marr ▲
 Ruth Miller ▲
 Daniel Moss
 Odem Foundation at the Jewish
 Foundation of Greater Toronto ▲
 Iris Peretz ▲▲
 Martin Prieur
 Sandra Proos ▲▲
 David Propp
 & Debby Shapero Propp ▲
 Jennifer Radovitzky
 Ian & Heather Ringel ▲
 Kevin & Nira Rittenberg ▲
 Steven Rogul & Rivian Miller ▲
 John & Hannah Rosen ▲
 Gale Rubenstein
 Talia Rubin Professional Corporation
 Sharon & Stephen Sandler
 Dr. Stephanie Schechter
 Benjamin & Estelle Schneider Fund
 at the Jewish Foundation
 of Greater Toronto
 Josh Schwartz
 Seyglor Consultants Inc. ▲
 Steven Shadowitz
 Gary Shiff ▲
 Sarah Shiff
 Harold & Beverly Shifman ▲
 Garry z"l & Helene Shomair ▲
 Sue & Sid Silverberg
 Beth Singer
 Ellen & Allen Smoskowitz
 Ron Soreanu
 Lauren Stein ▲▲
 Nancy Prusky & Ron Steinberg
 Jonathan Strauss
 Title Textile Company - Division of
 Title Dress Limited ▲
 Marshall & Tova Train
 Dr. Robert W. Wald
 Daniel & Susan Weisz ▲
 Howard & Janet Winkler ▲
 Lorne Wolfson
 & Lorie Shekter-Wolfson ▲
 David & Jodi Yackness
 Dr. Robert Zadik
 Anita Zelcer ▲
 Gail & Ronald Zuker
 Arnold & Sherry Zweig

\$180-\$359

Dorothy Aaron
 Diane Abbey-Livingston
 Gary Abrahamson
 Stephen Adler & Elana Metter ▲
 Kenny & Julie Albert
 Jeremy Alter ▲

Karen & Albert Amato
 Pyllis Angel ▲
 Earl Angus
 Molly Anisman
 Debra & Robert Antonishen
 Evelyn & Ira Applebaum ▲
 Katharine Auslander ▲
 Baker Real Estate Incorporated
 Wendy Balaban
 Carly Bardikoff ▲
 Jay Basian
 Justin & Elissa Beber
 Michael Belz
 Gary Bensky ▲
 Alan & Wendy Berger
 Gay & Johnny Berger ▲
 Sarah Bergman ▲
 Robert Berkovitz
 Corinne Berman ▲
 Gail Berman ▲▲
 Bessin Family Foundation ▲
 Sylvie Bielack
 Allan & Carol Bierbrier
 Natalie & Ian Bookman
 Dr. Risa Bordman ▲
 Rowena Borenstein
 Susanne Boucher
 Laura Bowman
 Brenda & John Bradlow ▲
 Allen Braude ▲▲
 Grace Brooker ▲
 Jennifer & Jay Brown
 Lisa Brownstone
 Jeremy & Alison Burke
 Rivka Campbell
 Robert & Arlene Caplan
 Luby Carr
 Mel Charendoff & Jan Charendoff
 Elizabeth & Lorne Chasson
 Noah Ciglen
 Fran Cohen
 Don Colt ▲
 Shoshannah Cooper-Porter ▲
 Bari Crackower
 Phillip & Helen Daniel Family Fund
 at the Jewish Foundation
 of Greater Toronto
 Karen Davidson ▲
 P. Ann Davidson ▲▲
 Audrey Diamant
 Dr. Sara L. Diamond
 Tyler Diamond
 Dr. & Mrs. Joel & Judy Dimitry
 Robert Dunn ▲▲
 Daniela Romain & Darren Edelist
 Peter Ekstein
 Bruce & Nancy Elman
 Dr. Jon Ennis ▲
 Rebecca Farkas
 Reah Feldman

Alan & Elaine Fink ▲
 Peter & Shelley Fink
 Murray & Janet Finkelstein
 Kirsten Menkes & Jamie Firsten
 Janice Fish ▲
 Stan & Michelle Flax ▲▲
 Mandy Fleischer
 Cynithai Flesher
 Nicki Weiss & Mike Fox ▲
 Elaine Frankel ▲
 Pamela Freedman
 Caryn & Allan Friedman ▲
 Sharon & Gerald Fryer ▲▲
 Dr. Maxine Gallander Wintre
 Lorraine & Shep Gangbar
 Arthur & Shelley Gans ▲
 Josephine Garrity
 Geffen Mallove Family Fund
 at the Jewish Foundation
 of Greater Toronto
 Eric Gertner Family Fund ▲
 Aline Gilor
 Faye Gitter ▲
 Richard Glennie
 Charles & Zana Glina
 Maryanne Morrow & Mark Goldstein
 Pamela Gollish ▲
 Toby Gonsko
 Freyda Goodman ▲
 Janis Goodman ▲
 Avrum & Linda Gotlieb ▲
 Debra Greenberg
 Elaine Greenberg
 Lesley Sandler-Griff and Adam Griff ▲
 Dr. Alan Grill & Fauna Grill ▲
 Sofia Grinshpun ▲
 Shane Grosman & Miriam Lubin
 Harlan & Amanda Gurvey ▲
 Brenda & Martin Gurvey ▲
 Laurie Gutmann
 Avi Guttman
 Noah Guttman
 Corrie Hain
 Peter & Edna Hajnal
 Daphna Heller ▲
 Ann & Edwin Hersch ▲
 Dr. Seymour Hershenfeld
 & Ms. Susan Weltman ▲
 Arthur & Beverly Herzig ▲
 Phyllis Wiseman & Gerald Hollinger
 Howard & Sharyn Hurwitz ▲
 Eddy Isaacs
 Dan & Janet Jakubowicz
 JF&CS Staff
 Miriam & Adam Joseph ▲
 Yael Kanter
 David & Lisa Kaufman
 Zev & Agi Kaufman ▲
 The Kelman Charitable Foundation ▲
 Janice Blakeney & Saul Kelner ▲

Suzanne Keppler
 Carole & Harvey z"l Kerbel ▲
 Sylvia Kestenberg
 Dora & Harry Kichler ▲
 Thomas Klein
 Ruby Knafo
 Udi Kochman
 Ronny Kofman
 Marshall S. Korenblum ▲
 Igor & Bonnie Korenzvit
 Mitchell Korman
 Jack & Sheila Kornblum ▲
 Susan Himel & Neil Kozloff ▲
 Eileen Kruger ▲
 Ruthie Ladovsky Endowment Fund
 at the Jewish Foundation
 of Greater Toronto ▲
 Dr. Brian Lang ▲▲
 Holly Goren Laskin & John Laskin ▲
 Denis Lawee
 Jonathan & Malka Lebi ▲▲
 Sam & Helen Lepak ▲
 Vivian Kwinta-Lepofsky
 - In memory of Michael Lepofsky ▲
 Melissa & Gary Lester
 Pearl Levey ▲
 Irving & Ruth Levine ▲
 Lauren & Mark Levine
 Naomi Levinson
 Barbara Librach ▲
 Marli & Kyle Lichtman ▲
 Julia Lipovetsky
 Beverly Little
 Ilana Magder ▲
 Nicole & Philip Magder ▲
 Varun Malik
 Iris Mandel
 Lauren Mandel
 Dr. Ira Marder ▲
 Randolph & Risa Masters
 Irving Matlow ▲
 Beth McAuley
 Martha McGrath
 Patrick McKee
 Jordan Mecklinger
 Ruth Merkur ▲
 Brian Meshwork
 Carol Strom & John Migicovsky
 Henza Miller ▲
 Jonathan & Paula Miller ▲
 Jack & Eleanor Mintz
 Dr. Faye Mishna
 Jill & Danny Morris
 Brian Moskowitz
 Rowley Mossop
 Mount Sinai Hospital Family
 and Community Medical
 Associates
 Rob & Rhonda Muroff
 Joseph & Lauren Nadler

Harvey Nagelberg
 Alicia Neufeld
 Dr. Errol Nezon & Ms. Rhonda Dick ▲
 Harvey & Marlene Nirenberg
 Dr. Sidney Nusinowitz
 Eileen Olmer ▲▲
 Osler, Hoskin & Harcourt LLP
 Dr. & Mrs. Michael & Aurelia Ostro ▲
 Dr. Sean Ostro
 Mrs. Florence Pape ▲
 Deanna & Edwin Peranson ▲
 Iris Peretz ▲▲
 Jennifer Gold & Nathan Perlis ▲
 Bonnie & Philip Plotnick
 Pomegranate Guild of Judaic Textiles
 Stephen Price
 Allan & Rosalyn Pyzer ▲▲
 Bernard & Sara Rachlin ▲
 Annette Rapoport ▲
 Rebecca (Rena) Reiff ▲
 Greta Reiss
 Lori Rubin-Ricer & Michael Ricer ▲
 Franklin & Milli Richmond ▲
 Ruth Roher ▲
 Michael & Susie Rosen
 Jessica Rosin
 Judith Ross
 Meir Rotenberg & Sharon Wolfe
 Family Fund at the Jewish
 Foundation of Greater Toronto
 Lynda & Ronnie Roth
 Ronald Rotman
 The Rowan Family
 Rowntree Enterprises Inc.
 Howard & Debra Rusak

Harvey Sachs ▲
 Irving & Jeanne Salit ▲
 Hazel Salman ▲
 Albert & Shelah Saltzman
 Matthew Sanders
 Stephen z"l & Linda Sandler ▲▲
 Howard & Judith Sandys ▲
 Jamie & Dena Saperia
 Andrew Sasson
 Claude & Trudy Sassoon
 Mark Satin
 Ari Schaefer & Amanda Gelfant
 Mark Schlein
 Ella Schwartz ▲
 Anne & Jeffrey Schwartz ▲
 Linda Brotman & Yoni Schwartz ▲
 Marsha Selick ▲▲
 Rebecca Shapero ▲
 Marina Shepaksov ▲▲
 Jordana Sheps ▲
 Sanford Shessel
 Diane & Gary Shiffman ▲
 Alan Shiner ▲
 Judith Shostack
 Michael Shupak
 Sheldon & Vivian Silverberg
 Mitchel Smith & Lili Little
 Sheila Smolkin
 Barbara Lee Sniderman
 David Soloway
 Rifka Sonenberg
 Dr. Lynn Spiegel
 Carolyn Marie Springer ▲
 Merle Stein
 Joseph & Elaine Steiner ▲

Ashley Steinhauer
 Zel & Ahava Stillman
 Alan & Etta Sugarman ▲
 Lanni Zinberg-Swartz
 Alon and Wendy Szpindel
 David Tal
 Judy & Larry Tanenbaum
 David & Meta Tannenbaum ▲
 Charles & Carol Tator
 Tracey A. Taylor ▲
 Sandra Teixeira
 John & Cinzia Temperato
 Tikkun 18 Foundation
 Alan & Debbie Topp
 Brandon Trask ▲▲
 Jack & Marsha Urowitz ▲
 Ilana Valo
 Rebecca Valo
 Roy Vanderine ▲
 Phyllis & Irving Vineberg ▲
 Jospeh Visenberg
 Debra & Gary Walters
 Melvin Wasserman
 Florence Weinberger
 Thomas & Jill Weinberger ▲
 Kenneth Wener
 Linda Wolfe ▲
 Asia Wolfman ▲
 Shirley Worth ▲
 Hadassah Goldberg
 & Jay Wortsman ▲
 Rafi & Sam Yablonsky
 Kathy Zilbert
 Bari & Ted Zittell ▲
 Carole Zucker

**None of our progress and growth over the last
 year would be possible without our generous
 donors, funders and community partners.**

LEADERSHIP

We are proud to recognize the leadership that continues to inspire the growth and development of JF&CS.

BOARD OF DIRECTORS

President

Sharon List

Immediate Past-President

Helen Goldlist

Vice Presidents

Dr. Michael Minden
Talia Rubin

Treasurer

Barry Eisen

Secretary

Carly Bardikoff

Members at Large

Jeffrey Goldfarb
Jonathan Seliger
Mark Shiner

Board Members

Stephen Adler
Ariella Baron
Michael Blinick
Lindsay Detsky
Shira Goldenberg
Saul Goodman
Deborah Jacobs
Harold Rosenfeld
Lisa Winberg

Management Team

Chief Executive Officer

Talyah Breslin

Director, Family Services

Robyn Cohen

Director, Child Welfare

Brahm Goldenberg

Director, Family Services

Pamela James

Director, Research & Evaluation

Nikki Mann, PhD

Director, Human Resources & Administration

Ilana Masas

Chief Financial Officer & Director of Corporate Services

Andrey Timofeev

Director, Development & Communications

Hannah Wasserman

Summarized Operating FINANCIAL STATEMENTS

For the year ended March 31, 2025

Revenues

	2025		2024	
Ontario Ministry of Children, Community and Social Services	10,034,388	41%	9,950,243	40%
Ontario Ministry of Health	934,011	4%	990,580	4%
Other government funding	208,672	1%	102,463	0%
UJA Federation of Greater Toronto	5,033,860	20%	5,324,665	22%
United Way	1,535,618	6%	1,555,125	6%
Direct Donations	5,007,745	20%	5,055,962	21%
Claims Conference	866,050	4%	616,050	2%
York Municipality	155,025	1%	151,257	1%
Fees from clients	210,508	1%	223,436	1%
Other income	666,599	3%	683,178	3%

Total Revenues

24,652,476 100% 24,652,959 100%

Expenses

Salaries and employee benefits	16,763,278	65%	16,024,903	63%
Direct costs for the care of children	1,977,452	8%	1,748,648	7%
Direct financial assistance to clients	1,611,683	6%	2,102,958	8%
Program support	3,154,615	12%	2,984,398	12%
Other clients' assistance and beneficiaries	1,947,048	7%	2,095,401	8%
Other programs	317,388	1%	408,728	2%
Amortization of capital assets	197,046	1%	187,013	1%

Total expenses

25,968,510 100% 25,552,049 100%

Deficiency
(excess of revenues over expenses for the year)

(1,316,034) (899,090)

Audited Financial Statements
are available online at
www.jfandcs.com/funding-and-financial-statements

CRA registered charity
118974229RR0001

Please view Privacy Statement
at www.jfandcs.com/privacy

Funded by:



Ontario



UJA FEDERATION
of Greater Toronto



United Way
Greater Toronto



Fondation
Azrieli



Accredited by:



ACCREDITED
Visiting Hospice and
Grief & Bereavement Support
HPCO
Hospice Palliative Care Ontario



Funded by:



Federal Ministry
of Finance

on the basis of a decision
of the Bundestag



JF&CS

**JEWISH FAMILY AND CHILD
SERVICE OF GREATER TORONTO**

4600 Bathurst Street | Toronto, Ontario | M2R 3V3